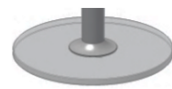
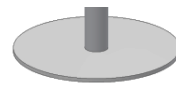




Model type	Leg / metal parts	Size
	steel polished chrome	W - L - H approx. in cm
1010 side table round	base 1 glass 19 mm standard	35 ø x 35 / 40 / 45 50 / 55 / 60
		50 ø x 35 / 40 / 45 50 / 55 / 60
		60 ø x 35 / 40 / 45 50 / 55 / 60



base 1 - standard
glass round, 19 mm
28 cm ø resp. 35 cm ø



base 2
steel base round, 8 mm
30 cm ø

Please indicate in your order:

Favored table height.

Steel tube diameter in mm	Base plate diameter in mm	Top glass 12 mm clear
25 ø	28 ø	single table nest of three
25 ø	35 ø	single table nest of three
25 ø	35 ø	single table nest of three

Price supplements for special orders:

- pedestal (leg / metal parts) coated black
- pedestal (leg / metal parts) matt chrome or matt nickel finish
 - single table
 - nest of three
- base 2: polished chrome
- base 2: matt chrome or matt nickel finish
- base 2: coated black
- special height up to 60 cm

