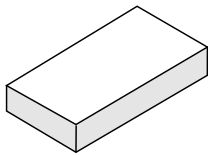
	<p>Rubinetti / Taps</p>
	<p>MEMORY</p>
	<p>AMEM312 -313</p>
	<p>GRUPPI LAVABO WASHBASIN TAPS</p>



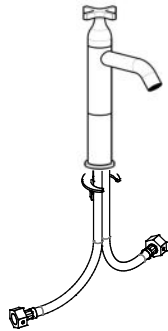
Prima di realizzare l'impianto
consultare la scheda Cod.
16024 e 16018

Before installing the system refer
to the Code tab. 16024 e 16018

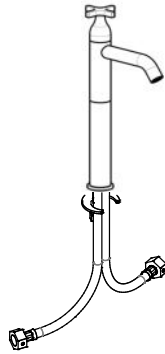
CONTENUTO DELLA CONFEZIONE
PACKAGE CONTENTS



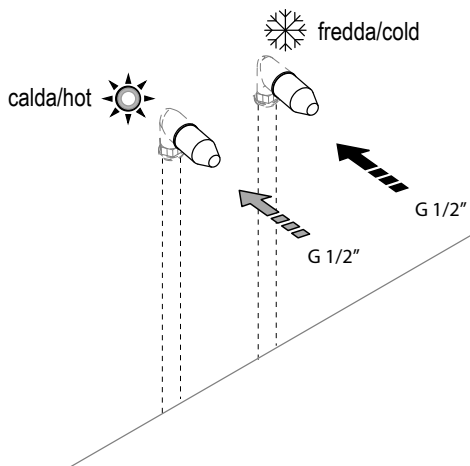
AMEM312
BOCCA DA 116.5



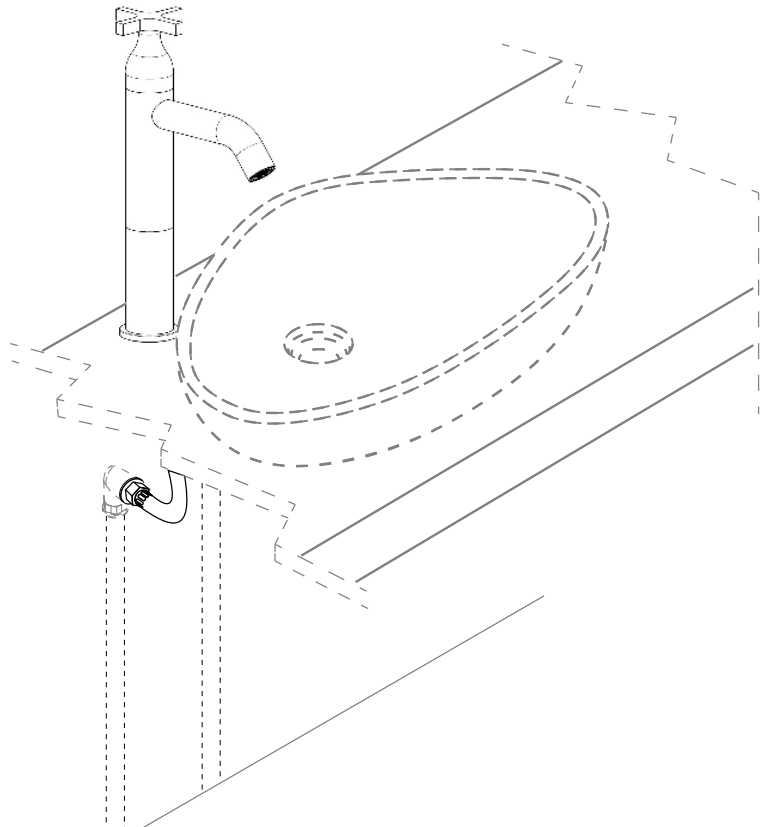
AMEM313
BOCCA DA 137



PREDISPOSIZIONE
PREDISPOSITION

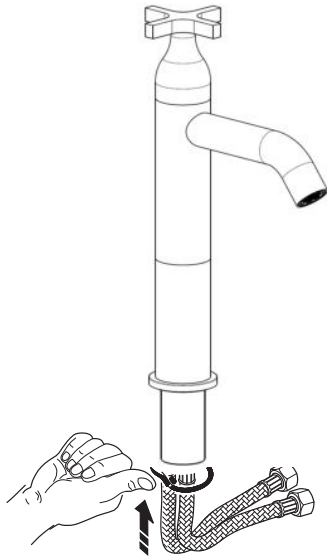


RUBINETTO DA PIANO
TOP MOUNTED TAP



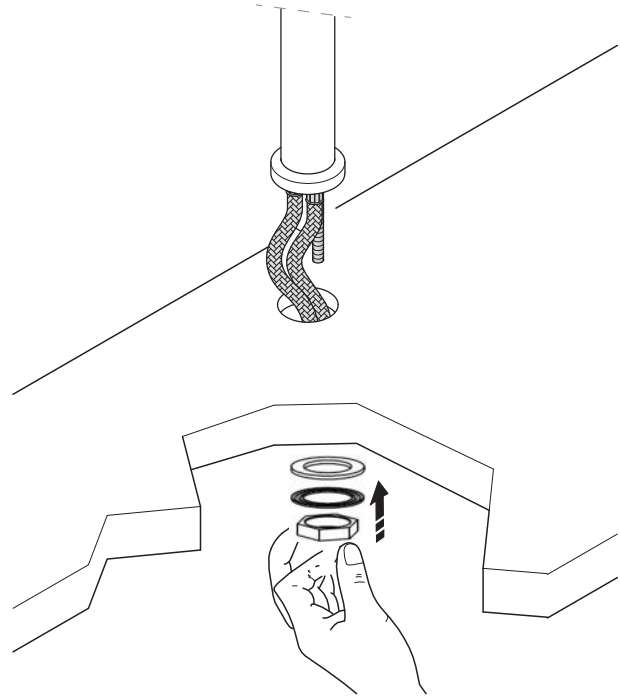
1

Inserire la guarnizione nella sede
Insert gasket into seating



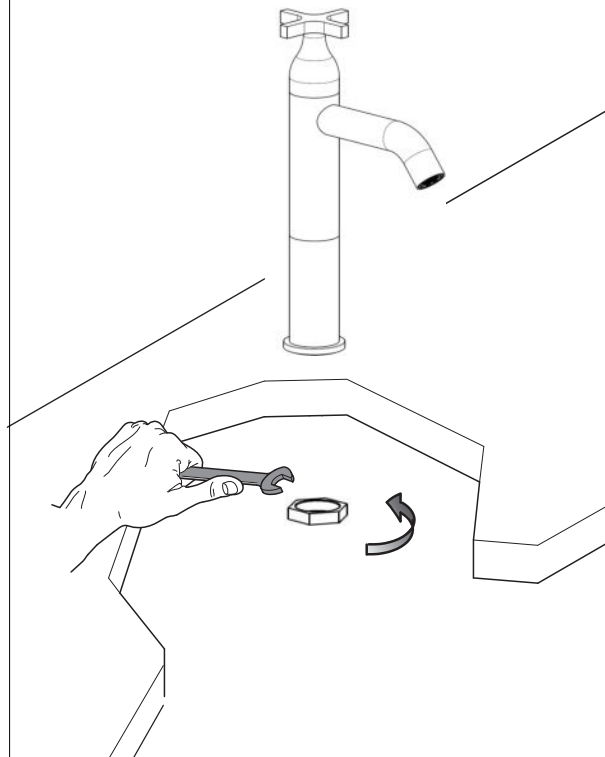
2

Inserire la guarnizione in gomma , flangia in acciaio e
controdado
Insert the gasket, steel flange and locknut



4

Per bloccare il rubinetto stringere con una chiave il
controdado
For fixing the mixer tape tighten the locknuts



AMEM312

AMEM313

