

Band

Dining armchair teak
by Patricia Urquiola

kettal

Dining armchair teak

Designer
Patricia Urquiola

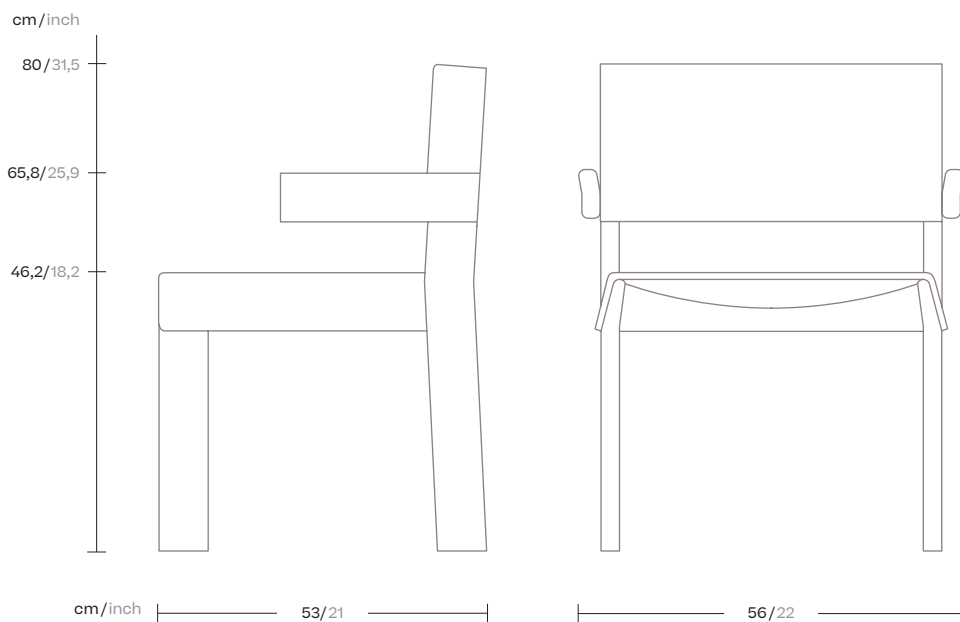
Collection
Band

Reference
KS2800400

1/3

The idea behind the BAND collection is the breakdown of structure. An object designed using an ensemble of pieces. The chair's design intentionally challenges the classic sophisticated lines of furniture design and becomes something schematic, a conceptual programme.

A structure made up of repetitive angular shapes that give centre stage to its raw materials, and can be formed entirely of aluminium or teak wood, and of Terrain Fabrics.



kettal

Dining armchair teak

Designer
Patricia Urquiola

Collection
Band

Reference
KS2800400

2/3

Materials

Fabric
Heavy Load 100.000 Cycles,
Heavy Load Resistant 1000
Decitex, Kettalize-It, Resist U.v.
En-581-4, Easy Clean, Abrasion,
Resistance 30.000 Cycles,
Quickdry

Teak
Teak A-Grade, Eco Friendly
Oeko-Tek

Frame



Teak
904

Maintenance

Clean with mild soap using
sponge or cloth. Be gentle
while cleaning, do not scrub
aggressively the fabric. Once
cleaned please make sure you
remove soap excess.

In case of aggressive stains
clean with diluted household
bleach.

Clean stains promptly. The
longer it remains, more difficult
will be to remove.

Once cleaned the fabric steam
iron the fabric. Just use steam,
be carefull NOT placing the
iron directly in the fabric it will
get damage.

Dining armchair teak

Designer
Patricia Urquiola

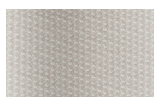
Collection
Band

Reference
KS2800400

3/3

Fabric Options

Terrain Fabrics Laminate



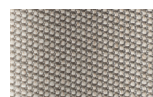
White Cliffs
290



Dry Sand
285



Porous Grey
291



Limestone
292



Fog
289



Deer
286



Wet Sand
287



Cobblestone
302



Cyprus Umber
301



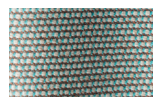
Loam
297



Charcoal
293



Arctic
295



Fjord
248



Cerulean
314



Caribbean
298



Atlantic
311



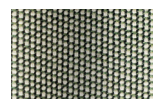
Rainforest
312



Lagoon
249



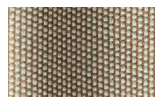
Cedar
288



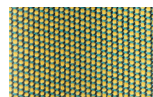
Moss
296



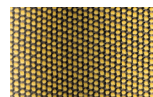
Olive
313



Autumn
315



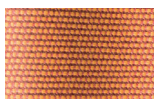
Summer Sky
317



Golden Sand
303



Flamma
304



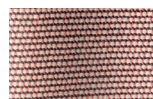
Sunrise
299



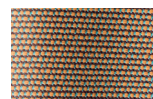
Saffron
305



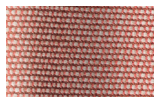
Burnt Sienna
306



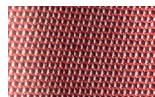
Ash Rose
294



Cooper
316



Dusk Pink
307



Flamingo
310



Coral
309



Sandstone
308