

Basket
Outdoor club chair
by Nanna and Jørgen
Ditzel

kettal

Outdoor club chair

Designers
Nanna and Jørgen Ditzel

Collection
Basket

Reference
KS1000100

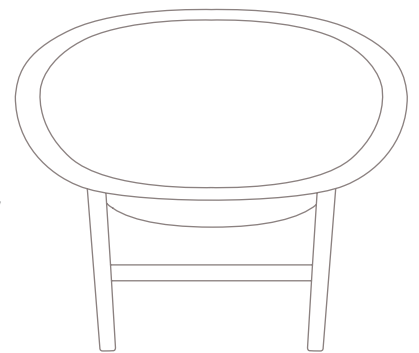
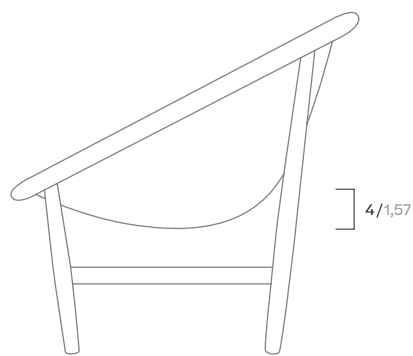
1/3

Kettal edits the Basket chair, created in the 1950s by Danish designers Nanna and Jørgen Ditzel. The Basket chair, made from oak, comes in its original version created by the Ditzel, hand-braided in wicker, and in an outdoor version, made from artificial fibre and teak.

cm/inch

76/29,9

37/14,5



cm/inch

79/31,1

85/33,4



kettal

Outdoor club chair

Designer
Nanna and Jørgen Ditzel

Collection
Basket

Reference
KS1000100

2/3

Materials

Teak
Eco Friendly Oeko-Tek

Synthetic fiber
Easy Clean, Abrasion, Resistance
10.000 Cycles

Optional Colours
Fabrics, Laminate Fabrics

Maintenance

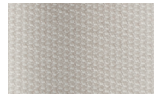
Clean with mild soap using sponge or cloth. Be gentle while cleaning, do not scrub aggressively the fabric. Once cleaned please make sure you remove soap excess.

In case of aggressive stains clean with diluted household bleach.

Clean stains promptly. The longer it remains, more difficult will be to remove.

Once cleaned the fabric steam iron the fabric. Just use steam, be carefull NOT placing the iron directly in the fabric it will get damage.

Seat & Back Cushion



White Cliffs
290



Dry Sand
285



Deer
286



Wet Sand
287



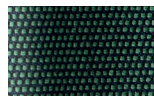
Charcoal
293



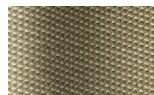
Arctic
295



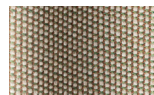
Atlantic
311



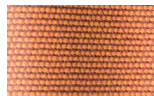
Rainforest
312



Olive
313



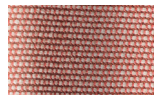
Autumn
315



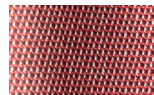
Sunrise
299



Saffron
305

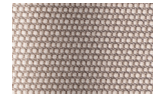


Dusk Pink
307

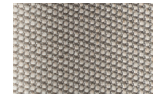


Flamingo
310

Terrain Fabrics



Porous Grey
291



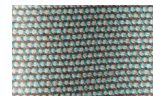
Limestone
292



Cobblestone
302



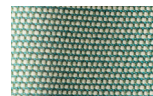
Cyprus Umber
301



Fjord
248



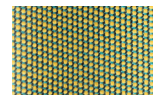
Cerulean
314



Lagoon
249



Cedar
288



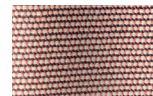
Summer Sky
317



Golden Sand
303



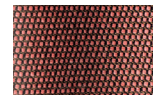
Burnt Sienna
306



Ash Rose
294



Coral
309



Sandstone
308



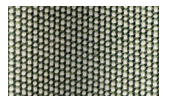
Fog
289



Loam
297



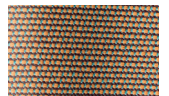
Caribbean
298



Moss
296



Flamma
304



Cooper
316

Frame



Teak
904

Outdoor club chair

Designer
Nanna and Jørgen Ditzel

Collection
Basket

Reference
KS1000100

3/3

Back Cushion

Geometric No Laminate Fabrics



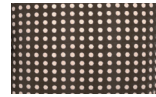
Umbra Brown
192



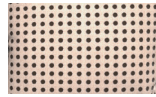
Dash Brown
162



Shade Brown
152



Dots Brown
142



Dots Light Brown
147



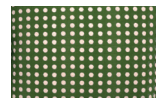
Umbra Green
191



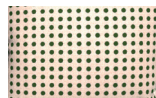
Dash Green
161



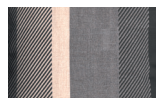
Shade Green
151



Dots Green
141



Dots Light Green
146



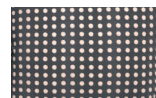
Umbra Grey
193



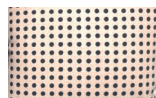
Dash Grey
163



Shade Grey
153



Dots Grey
143



Dots Light Grey
148



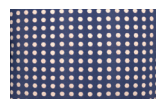
Umbra Blue
190



Dash Blue
160



Shade Blue
150



Dots Blue
140



Dots Light Blue
145



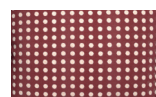
Umbra Red
194



Dash Red
164



Shade Red
154



Dots Red
144



Dots Light Red
149