

## DANDY sofa system

### Design

Rodolfo Dordoni

### Description

Outdoor sofa system

### Structure

Aluminium coated with a polyester paint;  
304 stainless steel hardware; adjustable feet.

### Padding

Made by three different types of open-cell polyurethanes enclosed in a 3D net; the padding is fixed to the structure by elastic belts in syntetic rubber.

### Covers

Made with outdoor fabrics; with filtering profiles. The sofa is completely removable.

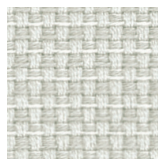
### Storage cover

Available

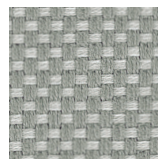


## DANDY exclusive outdoor fabric collection \*

### CAT. 1 / HD1



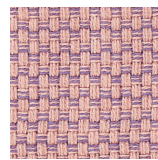
PANAMA X01 pearl



PANAMA X02 steel



PANAMA X03 lime



PANAMA X04 pink

### CAT. 2 / HD2



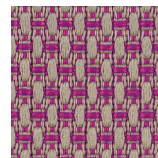
PIXEL E01 sand



PIXEL E02 peanut



PIXEL E03 oil



PIXEL E04 fuchsia



PLOT D01 sand



PLOT D02 mole



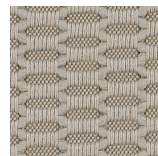
PLOT D03 oil



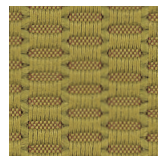
PLOT D04 fuchsia



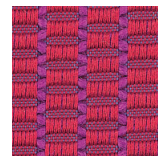
HIVE F01 ivory



HIVE F02 peanut

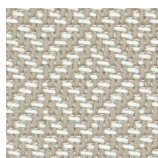


HIVE F03 oil

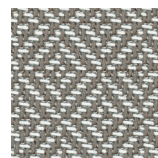


HIVE F04 fuchsia

### CAT. 3 / HD3



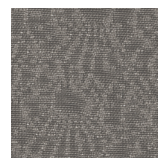
HAMPER J01 sand  
(scale 1:2)



HAMPER J02 mole  
(scale 1:2)



QUILT Q01 white  
(scale 1:5)



QUILT Q02 mole  
(scale 1:5)

\* DANDY can be made also with all the outdoor fabrics present in RODA range.

## DANDY 003 module + backrests/armrest

### Design

Rodolfo Dordoni

### Description

Sofa module for outdoor

### Structure

Aluminium coated with a polyester paint;  
304 stainless steel hardware; adjustable feet.

### Padding

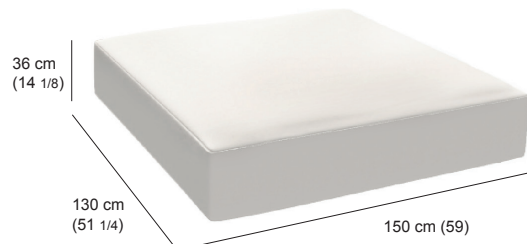
Made by three different types of open-cell polyurethanes enclosed in a 3D net; the padding is fixed to the structure by elastic belts in syntetic rubber.

### Covers

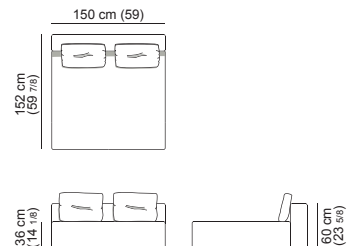
Made with outdoor fabrics; with filtering profiles.  
The sofa is completely removable.

### Storage cover

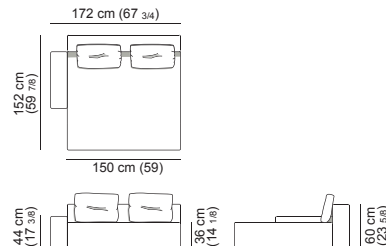
Available



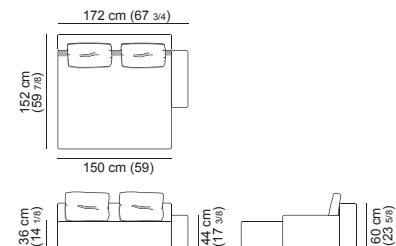
## DANDY 003 module - backrests/armrest possible compositions



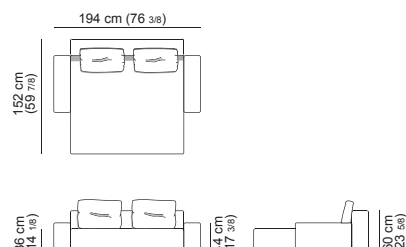
003 module + 005 backrest



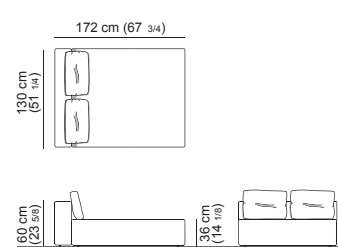
003 module + 005 backrest + 008 armrest



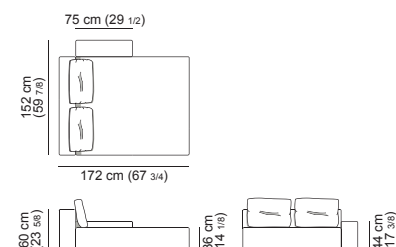
003 module + 005 backrest + 008 armrest



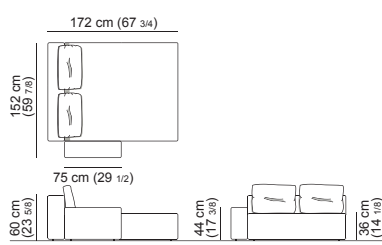
003 module + 005 backrest + (2x) 008 armrest



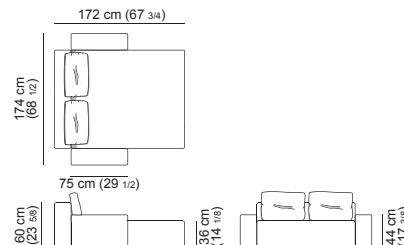
003 module + 006 backrest



003 module + 006 backrest + 008 armrest



003 module + 006 backrest + 008 armrest



003 module + 006 backrest + (2x) 008 armrest