

Molo

Right corner 3 seater

by Rodolfo Dordoni

kettal

Right corner 3 seater

Designer
Rodolfo Dordoni

Collection
Molo

Reference
GKS420800

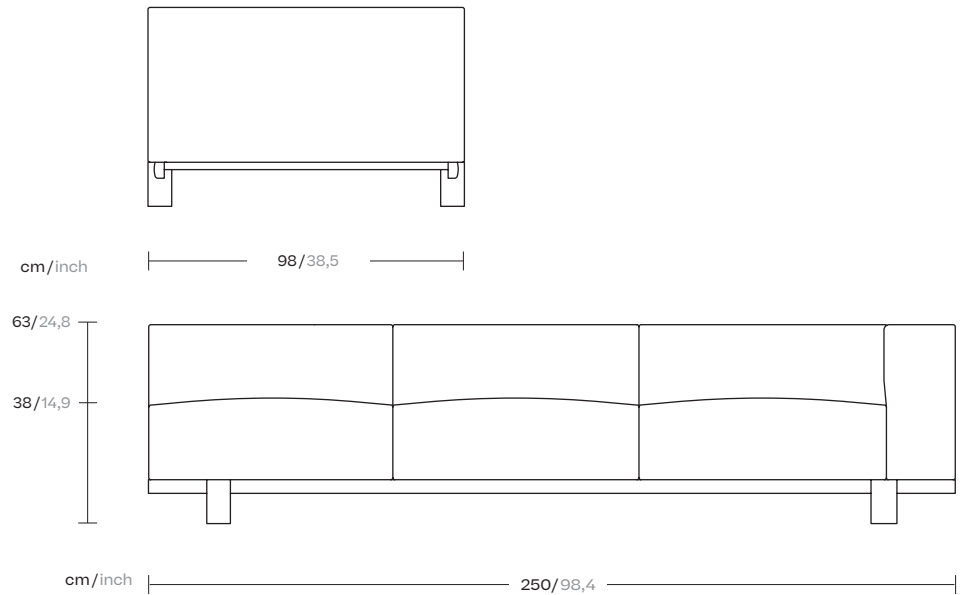
1/4

This is an example of a modular sofa in its purest form. Its orthogonal geometry is based on a rectangular modularity design, which means it can be easily adapted to suit any situation and optimise the space in which it sits.

Each module can be taken apart and re-organised, creating new uses and configurations.

The design is aesthetically minimalistic with intentionally oversized pieces.

On the other hand, the decorative elements have conscientiously not been emphasised in order to give centre stage to the various combinations of fabric, colours and carefully selected details.



kettal

Right corner 3 seater

Designer
Rodolfo Dordoni

Collection
Molo

Reference
GKS420800

2/4

Seat/Back Options

3 Seats / 3 Backs
1 Seat / 3 Backs
1 Seat / 1 Back

Legs Options



Teak



Concrete

Piping Options



No Piping



With Piping

Right corner 3 seater

Designer
Rodolfo Dordoni

Collection
Molo

Reference
GKS420800

3/4

Materials

Fabric
Heavy Load 100.000 Cycles,
Heavy Load Resistant 1000
Decitex, Kettalize-It, Resist U.v.
En-581-4, Easy Clean, Abrasion,
Resistance 30.000 Cycles,
Quickdry

Aluminium
Antioxy, Heavy Load, Resistant
En-1421, Kettalize-It, Anti-
Scratch, Easy Clean, Flame
Retardant M1, Eco Friendly
Ecoembes Recycling Process

Teak
Teak A-Grade, Eco Friendly
Oeko-Tek

Concrete

Maintenance

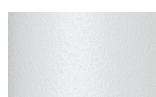
Clean with mild soap using
sponge or cloth. Be gentle
while cleaning, do not scrub
aggressively the fabric. Once
cleaned please make sure you
remove soap excess.

In case of aggressive stains
clean with diluted household
bleach.

Clean stains promptly. The
longer it remains, more difficult
will be to remove.

Once cleaned the fabric steam
iron the fabric. Just use steam,
be carefull NOT placing the
iron directly in the fabric it will
get damage.

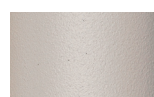
Frame Colour Options



Chalk
721



Bone
678



Tuff
103



Mist
773



Flint
734



London Clay
729



Mahogany
100



Carbon
737



Lilac
104



Feldspar
082



Sepia
088



Terra Rossa
087



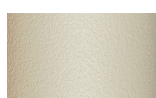
Magma
086



Terracota
085



Sahara
139



Camomile
106



Aquamarine
107



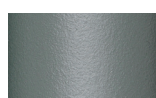
Cobalt
089



Indigo
094



Jade
091



Onyx
101



Juniper
092



Amazon
102



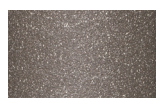
Bronze
093



Corten
727



Claystone
741



Sand Storm
132



Pumice
131



Galena
105



Manganese
726

Legs Colour Options



Teak
904



Concrete
880

Other

Right corner 3 seater

Designer
Rodolfo Dordoni

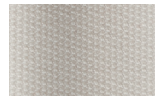
Collection
Molo

Reference
GKS420800

4/4

Fabric & Cushion Colour Options

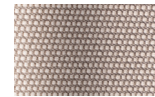
Terrain Laminate Fabrics



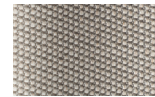
White Cliffs
290



Dry Sand
285



Porous Grey
291



Limestone
292



Fog
289



Deer
286



Wet Sand
287



Cobblestone
302



Cyprus Umber
301



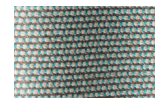
Loam
297



Charcoal
293



Arctic
295



Fjord
248



Cerulean
314



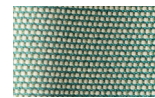
Caribbean
298



Atlantic
311



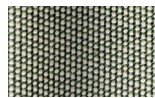
Rainforest
312



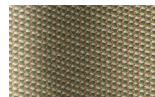
Lagoon
249



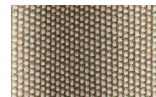
Cedar
288



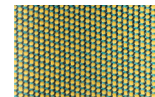
Moss
296



Olive
313



Autumn
315



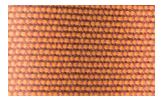
Summer Sky
317



Golden Sand
303



Flamma
304



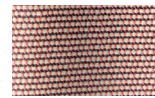
Sunrise
299



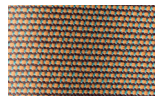
Saffron
305



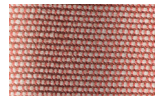
Burnt Sienna
306



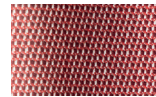
Ash Rose
294



Cooper
316



Dusk Pink
307



Flamingo
310



Coral
309



Sandstone
308

Molo

Right corner

3 seater open

by Rodolfo Dordoni

kettal

Right corner 3 seater open

Designer
Rodolfo Dordoni

Collection
Molo

Reference
GKS421000

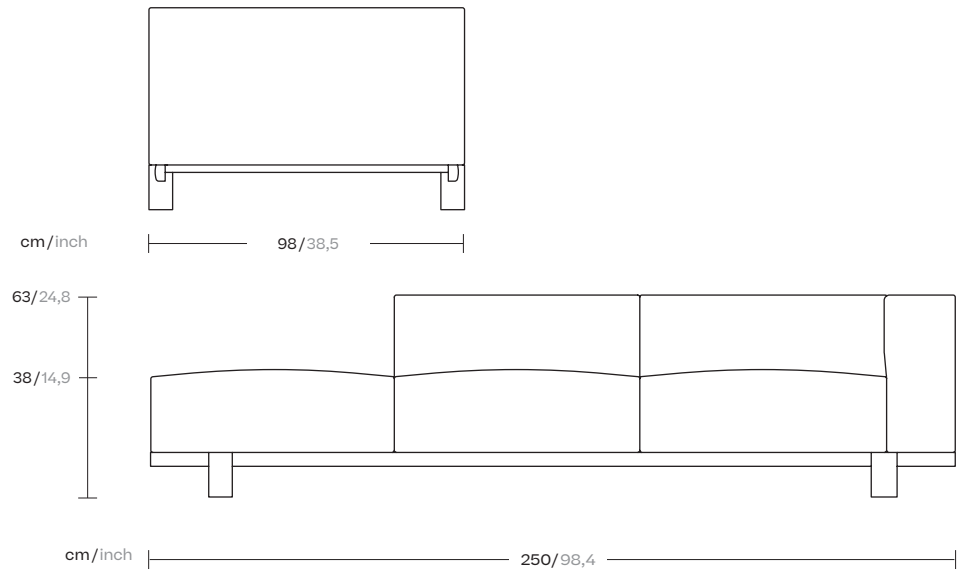
1/4

This is an example of a modular sofa in its purest form. Its orthogonal geometry is based on a rectangular modularity design, which means it can be easily adapted to suit any situation and optimise the space in which it sits.

Each module can be taken apart and re-organised, creating new uses and configurations.

The design is aesthetically minimalistic with intentionally oversized pieces.

On the other hand, the decorative elements have conscientiously not been emphasised in order to give centre stage to the various combinations of fabric, colours and carefully selected details.



kettal

Right corner 3 seater open

Designer
Rodolfo Dordoni

Collection
Molo

Reference
GKS421000

2/4

Seat/Back Options

3 Seats / 3 Backs
1 Seat / 3 Backs
1 Seat / 1 Back

Legs Options



Teak



Concrete

Piping Options



No Piping



With Piping

Right corner 3 seater open

Designer
Rodolfo Dordoni

Collection
Molo

Reference
GKS421000

3/4

Materials

Fabric

Heavy Load 100.000 Cycles,
Heavy Load Resistant 1000
Decitex, Kettalize-It, Resist U.v.
En-581-4, Easy Clean, Abrasion,
Resistance 30.000 Cycles,
Quickdry

Aluminium

Antioxy, Heavy Load, Resistant
En-1421, Kettalize-It, Anti-
Scratch, Easy Clean, Flame
Retardant M1, Eco Friendly
Ecoembes Recycling Process

Teak

Teak A-Grade, Eco Friendly
Oeko-Tek

Concrete

Maintenance

Clean with mild soap using
sponge or cloth. Be gentle
while cleaning, do not scrub
aggressively the fabric. Once
cleaned please make sure you
remove soap excess.

In case of aggressive stains
clean with diluted household
bleach.

Clean stains promptly. The
longer it remains, more difficult
will be to remove.

Once cleaned the fabric steam
iron the fabric. Just use steam,
be carefull NOT placing the
iron directly in the fabric it will
get damage.

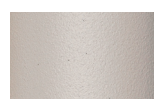
Frame Colour Options



Chalk
721



Bone
678



Tuff
103



Mist
773



Flint
734



London Clay
729



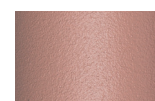
Mahogany
100



Carbon
737



Lilac
104



Feldspar
082



Sepia
088



Terra Rossa
087



Magma
086



Terracota
085



Sahara
139



Camomile
106



Aquamarine
107



Cobalt
089



Indigo
094



Jade
091



Onyx
101



Juniper
092



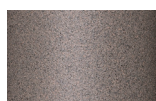
Amazon
102



Bronze
093



Corten
727



Claystone
741



Sand Storm
132



Pumice
131



Galena
105



Manganese
726

Legs Colour Options



Teak
904



Concrete
880

Other

Right corner 3 seater open

Designer
Rodolfo Dordoni

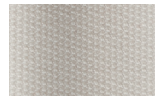
Collection
Molo

Reference
GKS421000

4/4

Fabric & Cushion Colour Options

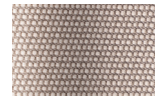
Terrain Laminate Fabrics



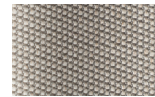
White Cliffs
290



Dry Sand
285



Porous Grey
291



Limestone
292



Fog
289



Deer
286



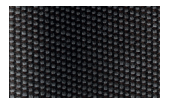
Wet Sand
287



Cobblestone
302



Cyprus Umber
301



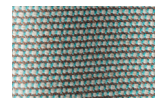
Loam
297



Charcoal
293



Arctic
295



Fjord
248



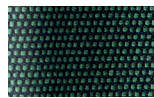
Cerulean
314



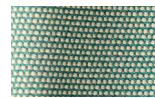
Caribbean
298



Atlantic
311



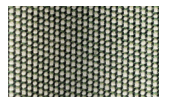
Rainforest
312



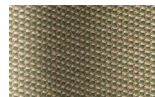
Lagoon
249



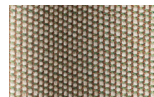
Cedar
288



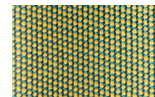
Moss
296



Olive
313



Autumn
315



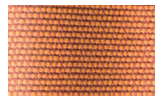
Summer Sky
317



Golden Sand
303



Flamma
304



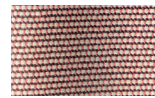
Sunrise
299



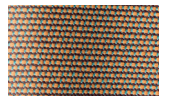
Saffron
305



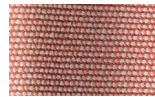
Burnt Sienna
306



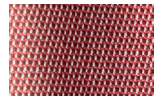
Ash Rose
294



Cooper
316



Dusk Pink
307



Flamingo
310



Coral
309



Sandstone
308