

Molo

Left corner 4 seater  
by Rodolfo Dordoni

**kettal**

# Left corner 4 seater

Designer  
Rodolfo Dordoni

Collection  
Molo

Reference  
GKS421400

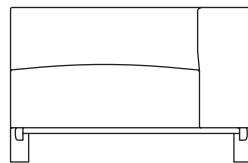
1/4

This is an example of a modular sofa in its purest form. Its orthogonal geometry is based on a rectangular modularity design, which means it can be easily adapted to suit any situation and optimise the space in which it sits.

Each module can be taken apart and re-organised, creating new uses and configurations.

The design is aesthetically minimalistic with intentionally oversized pieces.

On the other hand, the decorative elements have conscientiously not been emphasised in order to give centre stage to the various combinations of fabric, colours and carefully selected details.

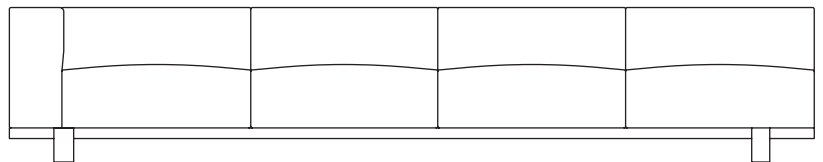


98/38,5

cm/inch

63/24,8

38/14,9



cm/inch

326/128,3



kettal

# Left corner 4 seater

Designer  
Rodolfo Dordoni

Collection  
Molo

Reference  
GKS421400

2/4

## Seat/Back Options

---

4 Seats / 4 Backs  
2 Seats / 4 Backs  
2 Seats / 2 Backs

## Legs Options

---



Teak



Concrete

## Piping Options

---



No Piping



With Piping

# Left corner 4 seater

Designer  
Rodolfo Dordoni

Collection  
Molo

Reference  
GKS421400

3/4

## Materials

**Fabric**  
Heavy Load 100.000 Cycles,  
Heavy Load Resistant 1000  
Decitex, Kettalize-It, Resist U.v.  
En-581-4, Easy Clean, Abrasion,  
Resistance 30.000 Cycles,  
Quickdry

**Aluminium**  
Antioxy, Heavy Load, Resistant  
En-1421, Kettalize-It, Anti-  
Scratch, Easy Clean, Flame  
Retardant M1, Eco Friendly  
Ecoembes Recycling Process

**Teak**  
Teak A-Grade, Eco Friendly  
Oeko-Tek

**Concrete**

## Maintenance

Clean with mild soap using  
sponge or cloth. Be gentle  
while cleaning, do not scrub  
aggressively the fabric. Once  
cleaned please make sure you  
remove soap excess.

In case of aggressive stains  
clean with diluted household  
bleach.

Clean stains promptly. The  
longer it remains, more difficult  
will be to remove.

Once cleaned the fabric steam  
iron the fabric. Just use steam,  
be carefull NOT placing the  
iron directly in the fabric it will  
get damage.

## Frame Colour Options



Chalk  
721



Bone  
678



Tuff  
103



Mist  
773



Flint  
734



London Clay  
729



Mahogany  
100



Carbon  
737



Lilac  
104



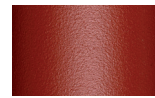
Feldspar  
082



Sepia  
088



Terra Rossa  
087



Magma  
086



Terracota  
085



Sahara  
139



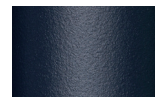
Camomile  
106



Aquamarine  
107



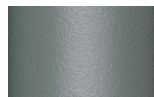
Cobalt  
089



Indigo  
094



Jade  
091



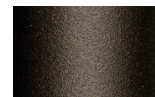
Onyx  
101



Juniper  
092



Amazon  
102



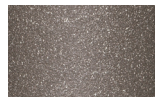
Bronze  
093



Corten  
727



Claystone  
741



Sand Storm  
132



Pumice  
131



Galena  
105



Manganese  
726

## Legs Colour Options



Teak  
904



Concrete  
880

## Other

# Left corner 4 seater

Designer  
Rodolfo Dordoni

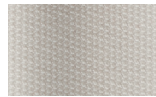
Collection  
Molo

Reference  
GKS421400

4/4

## Fabric & Cushion Colour Options

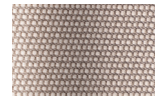
## Terrain Laminate Fabrics



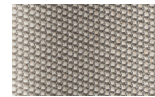
White Cliffs  
290



Dry Sand  
285



Porous Grey  
291



Limestone  
292



Fog  
289



Deer  
286



Wet Sand  
287



Cobblestone  
302



Cyprus Umber  
301



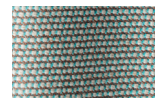
Loam  
297



Charcoal  
293



Arctic  
295



Fjord  
248



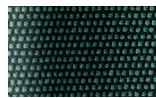
Cerulean  
314



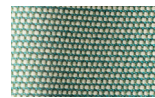
Caribbean  
298



Atlantic  
311



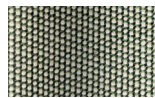
Rainforest  
312



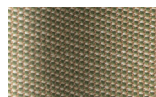
Lagoon  
249



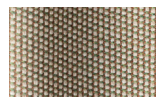
Cedar  
288



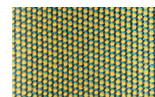
Moss  
296



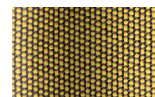
Olive  
313



Autumn  
315



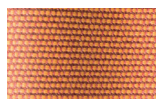
Summer Sky  
317



Golden Sand  
303



Flamma  
304



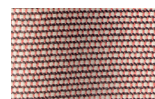
Sunrise  
299



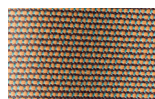
Saffron  
305



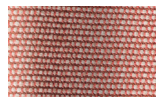
Burnt Sienna  
306



Ash Rose  
294



Cooper  
316



Dusk Pink  
307



Flamingo  
310



Coral  
309



Sandstone  
308

Molo

Left corner

4 seater open

by Rodolfo Dordoni

**kettal**



# Left corner 4 seater open

Designer  
Rodolfo Dordoni

Collection  
Molo

Reference  
GKS421600

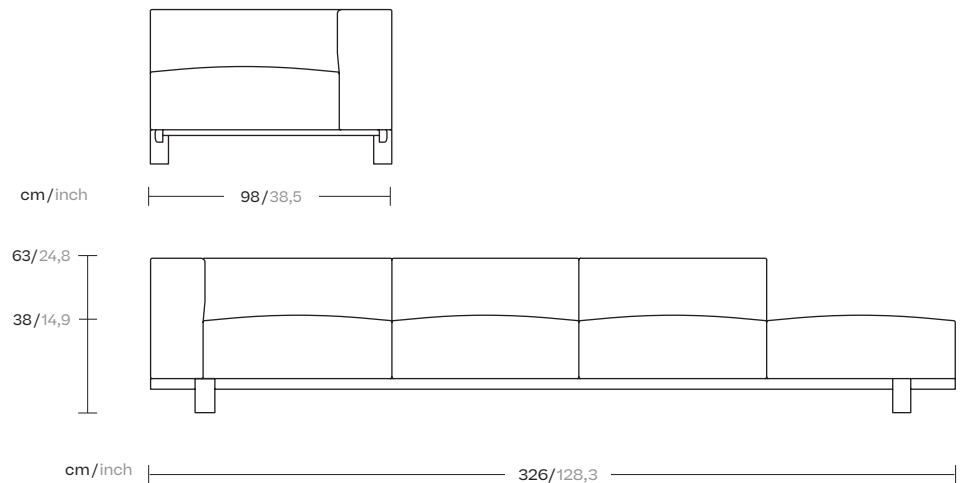
1/4

This is an example of a modular sofa in its purest form. Its orthogonal geometry is based on a rectangular modularity design, which means it can be easily adapted to suit any situation and optimise the space in which it sits.

Each module can be taken apart and re-organised, creating new uses and configurations.

The design is aesthetically minimalistic with intentionally oversized pieces.

On the other hand, the decorative elements have conscientiously not been emphasised in order to give centre stage to the various combinations of fabric, colours and carefully selected details.



kettal

# Left corner 4 seater open

Designer  
Rodolfo Dordoni

Collection  
Molo

Reference  
GKS421600

2/4

## Seat/Back Options

---

4 Seats / 3 Backs  
2 Seats / 3 Backs  
2 Seats / 1 Backs

## Legs Options

---



Teak



Concrete

## Piping Options

---



No Piping



With Piping



# Left corner 4 seater open

Designer  
Rodolfo Dordoni

Collection  
Molo

Reference  
GKS421600

3/4

## Materials

**Fabric**  
Heavy Load 100.000 Cycles,  
Heavy Load Resistant 1000  
Decitex, Kettalize-It, Resist U.v.  
En-581-4, Easy Clean, Abrasion,  
Resistance 30.000 Cycles,  
Quickdry

**Aluminium**  
Antioxy, Heavy Load, Resistant  
En-1421, Kettalize-It, Anti-  
Scratch, Easy Clean, Flame  
Retardant M1, Eco Friendly  
Ecoembes Recycling Process

**Teak**  
Teak A-Grade, Eco Friendly  
Oeko-Tek

Concrete

## Maintenance

Clean with mild soap using  
sponge or cloth. Be gentle  
while cleaning, do not scrub  
aggressively the fabric. Once  
cleaned please make sure you  
remove soap excess.

In case of aggressive stains  
clean with diluted household  
bleach.

Clean stains promptly. The  
longer it remains, more difficult  
will be to remove.

Once cleaned the fabric steam  
iron the fabric. Just use steam,  
be carefull NOT placing the  
iron directly in the fabric it will  
get damage.

## Frame Colour Options



Chalk  
721



Bone  
678



Tuff  
103



Mist  
773



Flint  
734



London Clay  
729



Mahogany  
100



Carbon  
737



Lilac  
104



Feldspar  
082



Sepia  
088



Terra Rossa  
087



Magma  
086



Terracota  
085



Sahara  
139



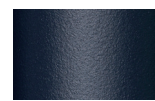
Camomile  
106



Aquamarine  
107



Cobalt  
089



Indigo  
094



Jade  
091



Onyx  
101



Juniper  
092



Amazon  
102



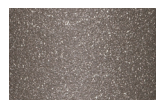
Bronze  
093



Corten  
727



Claystone  
741



Sand Storm  
132



Pumice  
131



Galena  
105



Manganese  
726

## Legs Colour Options



Teak  
904



Concrete  
880

## Other

# Left corner 4 seater open

Designer  
Rodolfo Dordoni

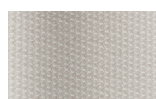
Collection  
Molo

Reference  
GKS421600

4/4

## Fabric & Cushion Colour Options

## Terrain Laminate Fabrics



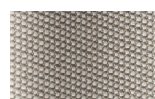
White Cliffs  
290



Dry Sand  
285



Porous Grey  
291



Limestone  
292



Fog  
289



Deer  
286



Wet Sand  
287



Cobblestone  
302



Cyprus Umber  
301



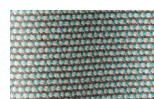
Loam  
297



Charcoal  
293



Arctic  
295



Fjord  
248



Cerulean  
314



Caribbean  
298



Atlantic  
311



Rainforest  
312



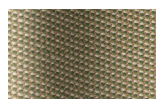
Lagoon  
249



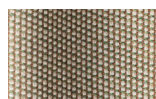
Cedar  
288



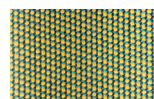
Moss  
296



Olive  
313



Autumn  
315



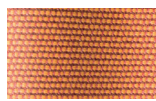
Summer Sky  
317



Golden Sand  
303



Flamma  
304



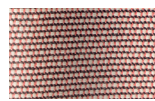
Sunrise  
299



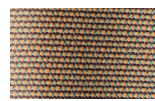
Saffron  
305



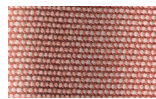
Burnt Sienna  
306



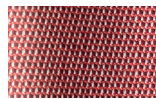
Ash Rose  
294



Cooper  
316



Dusk Pink  
307



Flamingo  
310



Coral  
309



Sandstone  
308