
Eyl

Oscar e Gabriele Buratti
2014



Tavolo con piano in cristallo 15 mm retroverniciato nei colori del campionario, nella versione brillante o satinata. Piano con bisello 3 cm. Base in legno rivestita in cristallo retroverniciato. Parti metalliche in acciaio inox lucido "supermirror".

Table with 15 mm painted glass top as per samples in the bright or satin version. Glass top with 3 cm bevelled edge. Wooden base covered by painted glass. "Supermirror" bright stainless steel metal parts.

*Dimensioni / Sizes**Cm:*

150 x 150 x 74h

210 x 130 x 74h

240 x 130 x 74h

260 x 130 x 74h

280 x 140 x 74h

300 x 140 x 74h

Inches:

59¼" x 59¼" x 29¼"h

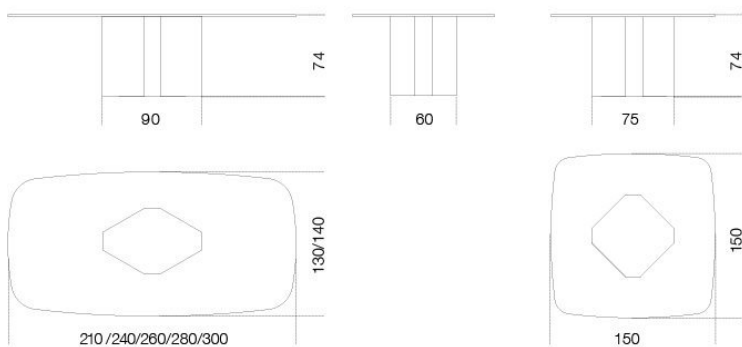
82" x 51¼" x 29¼"h

94" x 51¼" x 29¼"h

102" x 51¼" x 29¼"h

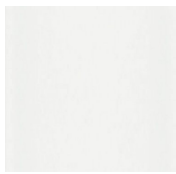
110¼" x 55¼" x 29¼"h

118" x 55¼" x 29¼"h





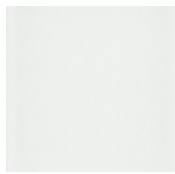
Cristallo / Glass



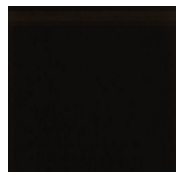
Extralight
Extralight



Bianco
brillante
Bright white



Bianco satinato
Satin white



Nero brillante
Bright black



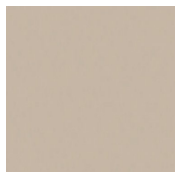
Nero satinato
Satin black



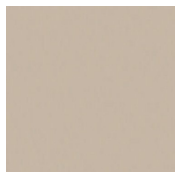
Cemento
brillante
Bright cement



Cemento
satinato
Satin cement



Champagne
brillante
Bright
champagne



Champagne
satinato
Satin
champagne



Cipria
brillante
Bright rose
powder



Cipria satinato
Satin rose
powder



Cadet blue
brillante
Bright cadet
blue



Cadet blue
satinato
Satin cadet
blue



Oliva brillante
Bright olive



Oliva satinato
Satin olive



Grigio beige
brillante
Bright taupe



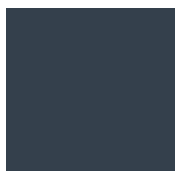
Grigio beige
satinato
Satin taupe



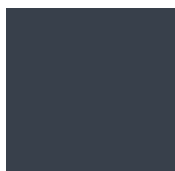
Grigio umbro
brillante
Bright dark
grey



Grigio umbro
satinato
Satin dark grey



Blu grigio
brillante
Bright blue
grey



Blu grigio
satinato
Satin blue grey



Liquirizia
brillante
Bright liquorice



Liquirizia
satinato
Satin liquorice



Visone
brillante
Bright mink



Visone satinato
Satin mink



Verde grigio
brillante
Bright green-
grey



Verde grigio
satinato
Satin green-
grey



Cristallo
Craquelé
Craquelé glass