
Twelve C

Massimo Castagna
2018



Twelve C

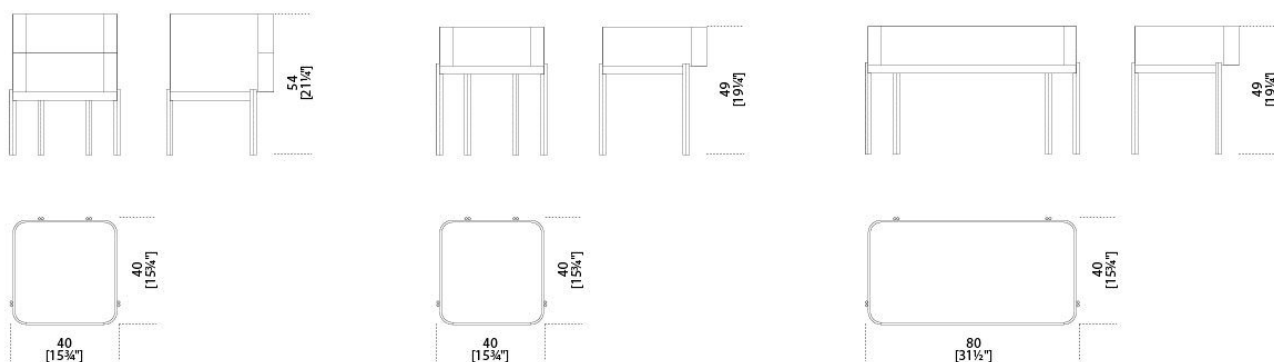
Massimo Castagna , 2018

Comodino in frassino laccato nero poro aperto. Piano in cristallo 6 mm decorato a mano nella finitura craquelé oppure retroverniciato liquirizia brillante. Struttura in ottone brunito a mano.

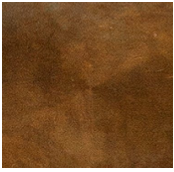
Black open pore lacquered ash night table. 6mm hand decorated craquelé or bright liquorice painted glass top. Hand burnished brass structure.

Dimensioni / Sizes
Cm (W x D x H)
A 40 x 40 x 49
B 40 x 40 x 54
C 80 x 40 x 49

Inches (W x D x H)
A 15¾" x 15¾" x 19½"
B 15¾" x 15¾" x 21½"
C 31½" x 15¾" x 19½"



Metallo / Metal



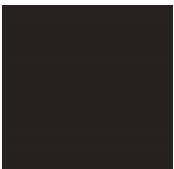
*Ottone brunito
a mano
Hand
burnished
brass*

Legno / Wood



*Nero poro
aperto (Layer)
Black open pore
(Layer)*

Cristallo / Glass



*Liquirizia
brillante
Bright liquorice*



*Cristallo
Craquelé
Craquelé glass*